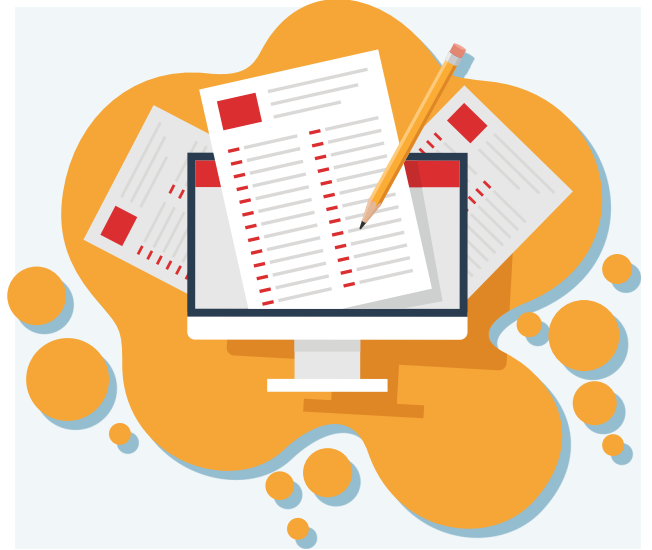


How to Take a Practice Test

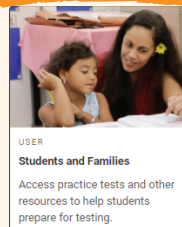
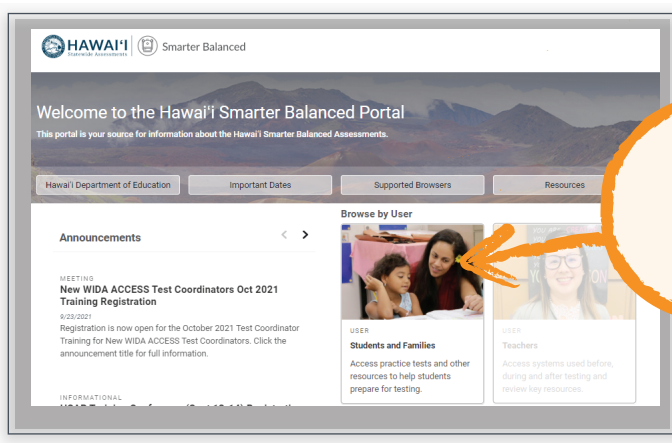
Before the day of the test, your child should take a practice test to make sure their computer and internet connection are working properly. If your child has any issues trying to take a practice test, please contact their teacher or school.

Follow these steps to help your child take a practice test.

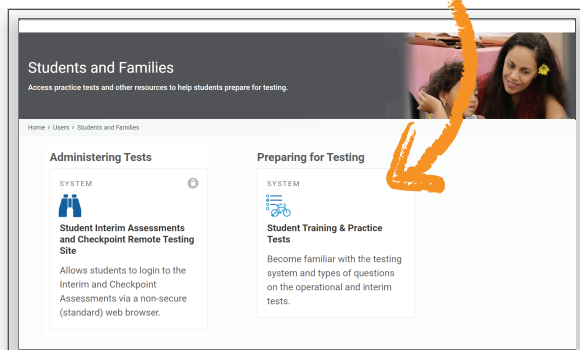


1 Open Chrome or Firefox and go to:
<https://smarterbalanced.alohahsap.org/>

2 Click Students and Families



3 Click Training & Practice Tests




How to Take a Practice Test

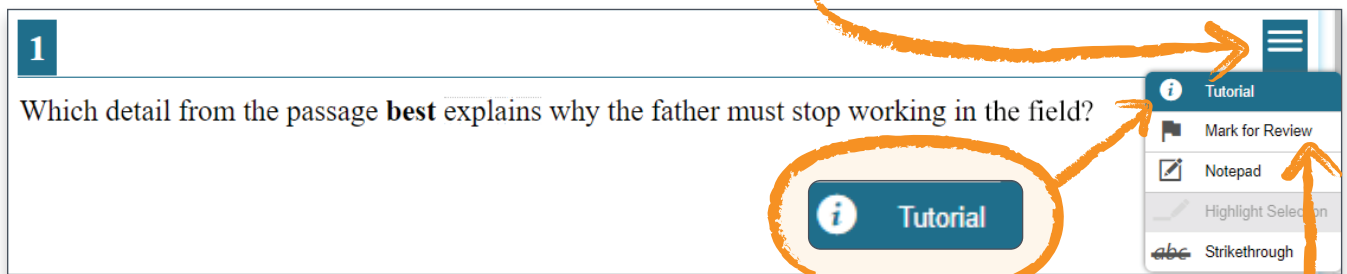
4 Sign into the practice test by following the prompts on the screen

The steps to sign into a practice test are exactly the same as signing into the actual test.

- Select your child's grade and a practice test for your child to take.
- Select your child's test settings. These are tools and accommodations your child can use during a test, such as text-to-speech or color schemes. For actual tests, your child's teacher will set these.
- If the test has audio/video components, use the audio/video checks to make sure your child's audio is working properly.

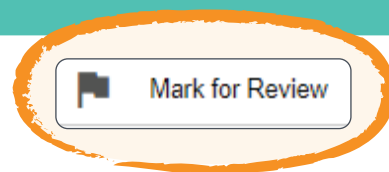
5 Have your child watch the question-type tutorials

To become familiar with the different question types on the test, your child can watch these tutorials by clicking the lined page icon  and select **Tutorial**.



6 Show your child the Mark for Review

If your child would like to review their answers during the test, click on **Mark for Review**.



To view a help guide for taking the test, go here:

http://guides.cambiumast.com/TDS_Student/Hawaii/studenthelp.htm