

Fall 2022 Accessibility and Accommodations Review Session

September 29, 2022 (*updated 9/30/2022*)

Elaine Lee, Ph.D.
Assessment Section
Hawai'i State Department of Education

Smarter Balanced Test Coordinator Training Dates SY 2022-2023 (memo)



Training Schedule for 2022-23

ACCESS Newbie TC Virtual October Training: [link to memo](#)

- Monday, October 24: Hilo/Kona/Charter
- Tuesday, October 25 :
Maui/Lanai/Molokai/Kauai/Hana
- Thursday, October 27: Windward/Central
- Friday, October 28 :
Leeward/Honolulu

Smarter Newbie TC Virtual November Training:

- Monday, November 14:Hilo/Kona/Charter
- Tuesday, November 15 :
Maui/Lanai/Molokai/Kauai/Hana
- Thursday, November 17:
Leeward/Honolulu
- Thursday, November 18:
Windward/Central

ACCESS Veterans/New TC In Person December Training:

Tentative Dates/Sites TBD (subject to change)

- Monday, December 5: Hilo
- Tuesday, December 6: Kona
- Thursday, December 8:Leeward/Charter
- Friday, December 9: Windward/Central
- Monday, December 12: Maui /(Lanai/Molokai fly into Maui)
- Thursday, December 15: Honolulu/Kauai/ (fly into Oahu)

Smarter Veterans/New TC and ALT TA In Person January Training.

TBD

Updating School Contact List

Schools with new Test Coordinators, Technology Coordinators, HSA-ALT Test Administrators, Accommodations Coordinators/SSCs etc., should update the Assessment Section [School Contacts List](#) as soon as possible to ensure that the new staff receive updated information on training sessions, professional development opportunities, reminders of deadlines, and links to reference and help documents.

- To **ADD** new test coordinators (or other roles), please select the employee from the Employee box drop down menu/select position/click **ADD**.
- To **DELETE** staff, please use the delete icon (trash can) in their row.
- For those **CONTINUING** in the existing role, click the “**Confirm**” button in the far right column.

click to select employee to add

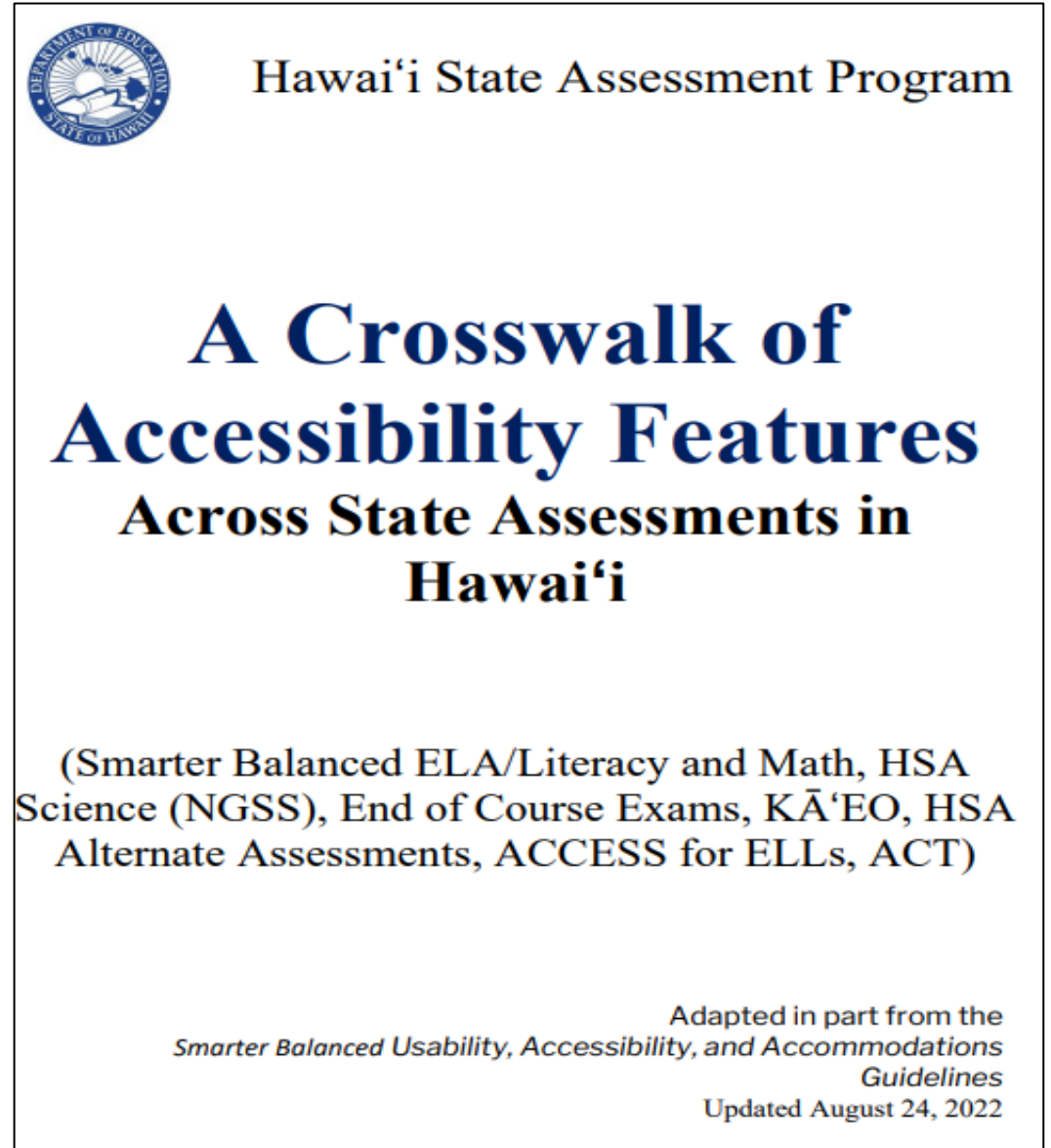
Employee Position

Position ▲	Employee	Added	Modified	Action	Confirm
Smarter Balanced Test Coordinator	<input type="text"/>	10/28/19 01:18 PM Sys	11/22/20 09:16 PM <input type="text"/>		Confirm

click to delete click to confirm

Accessibility & Accommodations Updates SY 2022-2023

1. Kaiapuni Assessment of Educational Outcomes Assessments (KĀ'EO) - will have their own state test accommodation verification process and form. More information is available in Section 5 of the [Crosswalk of Accessibility Features Across State Assessments in Hawai'i 2022-2023](#) (pp. 35-39, Crosswalk or CAF).



Accessibility & Accommodations Updates SY 2022-2023

2. Math Manipulatives State Accommodations – will continue to be available. For use, policy, and administration requirements, refer to the [Guidance Brief on Math Manipulatives 2022-2023.](#)



Hawai'i State Assessment Program Guidance Brief: IEP/504 Teams Considering the Math Manipulatives (MMs) State Test Temporary Accommodations (August 2022)

The Smarter Balanced Consortium granted the Hawai'i State Department of Education (Department) temporary approval to use Math Manipulatives (MMs) as accommodations for statewide testing in SY 2022-2023.

Math Manipulatives are non-embedded accommodations available for use on the Smarter Balanced Math Assessments and the Algebra 1 and 2 End-of-Course (EOC) Exams. The MMs accommodations allow eligible students with IEPs and 504 Plans to represent their understanding of mathematical concepts using visual and tactile concrete materials. Without this accommodation, eligible IEP/504 Plan students would not be able to demonstrate their conceptual understanding and fluency in mathematics.

The rationale for the limited term approval is to allow IEP/504 Plan students access to the construct of measure, support the use of concrete materials to build their conceptual understanding of mathematics, and provide an opportunity for the Department to collect data to support the continued use of MMs as state test accommodations.

Documented Need for the Math Manipulatives (MMs) State Test Accommodations

State test accommodations are intended to remove obstacles to student demonstration of knowledge and skills resulting from student disability without altering the assessed construct (*Standards for Educational and Psychological Testing, 2014*). State test accommodations are not intended to reduce expectations for learning, modify the curriculum, or artificially inflate a student's test score.

The MMs as state test accommodations are available to IEP/504 Plan students who:

1. have a documented visual or cognitive need for the use of MMs in their IEP or 504 Plan; and
2. use MM(s) to solve math tasks during classroom instruction and assessment.

Construct Measured by the State Tests in Mathematics

Statewide assessments measure our students against established standards and grade-level expectations for achievement. In Hawai'i, the Common Core and Next Generation Science Standards are used as the metric. The Smarter Balanced

Link to today's review session
PowerPoint Presentation

<https://smarterbalanced.alohahsap.org/resources#folder=Webinars>

SY 2022-23 Accessibility and Accommodations Materials and Resources

- ADVANCE (before 9/29/2022) Review materials and resources, containing accessibility and accommodation links, are posted at:

<https://smarterbalanced.alohahsap.org/resources/resources-2022-2023/accommodations-training-2022-2023>

OR Downloaded PDF: <https://smarterbalanced.alohahsap.org/-/media/project/client-portals/hawaii-smarter-balanced/pdf/2022q3/fall-2022-accessibility-and-accommodations-training-materials-and-resources.pdf> (see next slide)



Fall 2022 Accessibility and Accommodations Training Materials and Resources

For SY 2022-2023, the statewide policies and procedures regarding accessibility supports for state testing, including Math Manipulatives, remain the same as those in school year (SY) 2021-2022. Please note that KĀ'EO Assessments will have a separate state test accommodation verification process and form starting this SY (refer to Section V of the [Crosswalk of Accessibility Features Across State Assessments in Hawai'i 2022-2023](#) [Crosswalk or CAF] for more information).

The accessibility supports and processes described below are applicable to the Smarter Balanced English Language Arts/Literacy and Mathematics Assessments, HSA Science (NGSS) Assessments, and Biology and (optional) Algebra End-of-Course (EOC) exams.

If you have more questions about accessibility supports for state testing, please direct them to Elaine Lee, Ph.D., at Elaine.Lee@k12.hi.us.

1. Overview and Background of Accessibility Supports for State Testing

- i. Webinar: [MP4 video recording](#) and [PowerPoint](#)
- ii. Resources:
 - [Hawaii Statewide Assessment Program, School Year 2022-23](#)
 - [Hawaii Alternate Assessment Participation Guidelines](#)

2. Three Levels of Accessibility Supports Available for State Testing

- i. Webinar: [MP4 video recording](#) and [PowerPoint](#)
- ii. Resources:
 - [Crosswalk of Accessibility Features Across State Assessments in Hawai'i 2022-2023](#)

3. Universal Tools

Note: Information for the review has been provided in advance to help you prepare for today's one-hour review. Webinar recordings may make references to SY 2021-2022. There are no substantive changes to the state test accommodations policies and procedures from last SY.

PowerPoint presentations contain the updated SY 2022-2023 links.

Questions?

Overview and Background of Accessibility Supports for State Testing

Overview and Background of Accessibility Supports for State Testing

- Federal law covering accessibility supports for state testing
- Federal law requiring states to provide guidance on accessibility supports to ensure that they are appropriate and the provision of these supports do not invalidate test scores

State Test Participation Requirements

All students enrolled in **Grades 3–8 and 11** are required to participate in the Smarter Balanced summative assessments **EXCEPT**:

- **Students with the most significant cognitive disabilities** – take the Alternate Assessments (HSA-Alt) instead.
- **First year ELL students (U.S. school first year enrollees)** – take WIDA ACCESS test, but still required to take the math and the science tests (if applicable). If this first year ELL student does not take the WIDA ACCESS test, then they will need to take the ELA test.
- **Students who have: 1) a significant medical emergency, 2) out-of-state residential program or home-school placement, or 3) conditions that meet Regulation 4140, Exceptions to Compulsory School Attendance.**

Federal Annual Summative Participation Requirements

Individuals with Disabilities Education Act (IDEA) Sec. 300.160

(a) General. A State must ensure that **all children with disabilities are included in... State ...assessments** described under section 1111 of the ESEA, 20 U.S.C. 6311, **with appropriate accommodations and alternate assessments, if necessary...**

(b) Accommodation guidelines.

(1) A State...must develop guidelines for the provision of appropriate accommodations.

(2) The State's...guidelines must—

(i) Identify only those accommodations for each assessment that do not invalidate the score; and

(ii) Instruct IEP Teams to select, for each assessment, only those accommodations that do not invalidate the score.

Applicable Assessments

Review Session of STATE TEST SUPPORTS applies to the following assessments:

- Smarter Balanced ELA and Math Assessments (Gr. 3-8, 11)
- HSA Science (NGSS) Assessment (Gr. 5 & 8; HS Biology I EOC exam)
- Biology and (optional) Algebra End-of-Course (EOC) Exams

Review Session of STATE TEST SUPPORTS DOES NOT apply to:

- ACT
- Kaiapuni Assessment of Educational Outcomes Assessments (KA'EO) – Assessment Section no longer processes state test supports for KA'EO in SY 2022-23
- WIDA Assessments

STATE TEST SUPPORTS

	All Students	English learners (ELs)	Students with disabilities	ELs with disabilities
Universal Tools	✓	✓	✓	✓
Designated Supports	✓ ¹	✓ ¹	✓ ¹	✓ ¹
Accommodations			✓ ^{2, 3}	✓ ^{2, 3}

¹ Only for instances that an adult (or team) has deemed the supports appropriate for a specific student's testing needs.

² Only if the IEP/504 teams have followed the criteria found in the testing accommodation guides and met the criteria stated in them.

³ Medical exemption (e.g., such as broken arm or hand) as evidence of need for the Scribe and Speech-to-Text testing accommodations.

Embedded vs. Non-Embedded

Embedded

- ❑ Provided as part of the TDS/digital test delivery system (e.g., online dictionary)

Non-Embedded

- ❑ Provided externally (hardcopy dictionary) or
- ❑ Required additional software/hardware (e.g., Speech-to-Text*) **Consult the [Assistive Technology Manual](#) for a list of third party software programs that are compatible with the TDS.*

Universal Tools

Available to all Students

Source: [Crosswalk of Accessibility Features Across State Assessments in Hawai'i 2022-2023](#), page 4

Designated Supports

Embedded

Breaks, Calculator, Digital Notepad, English Dictionary, English Glossary, Expandable Passages and/or Items, Global Notes, Highlighter, Keyboard Navigation, Line Reader, Mark for Review, Math Tools, Periodic Table, Spell Check, Strikethrough, Thesaurus, Writing Tools, Zoom

Non-embedded

Breaks, English Dictionary, Scratch Paper, Thesaurus

Embedded

Color Contrast, Illustration Glossaries, Masking, Mouse Pointer, Streamline, Text-to-speech, Translations (Glossary), Translations (Dual Language), Turn off Any Universal Tools

Non-embedded

Amplification, Bilingual Dictionary, Color Contrast, Color Overlays, Illustration Glossaries, Magnification, Medical Supports, Noise Buffers, Read Aloud, Read Aloud in Spanish, Scribe, Separate Setting, Simplified Test Directions, Translated Student Interface Messages, Translations (Glossary)

Accommodations

Embedded

American Sign Language, Braille, Braille Transcript, Closed Captioning, Text-to-speech

Non-embedded

100s Number Table, Abacus, Alternate Response Options, Braille, Calculator, Math Manipulatives, Multiplication Table, Print on Demand, Read Aloud, Scribe, Speech-to-text, Word Prediction

Three Levels of Accessibility Supports Available for State Testing

Three Levels of Accessibility Supports Available for State Testing

- Universal Tools – Embedded and Non-Embedded
- Designated Supports – Embedded and Non-Embedded
- State Test Accommodations – Embedded and Non-Embedded

Universal Tools

Available to all Students

Source: [Crosswalk of Accessibility Features Across State Assessments in Hawai'i 2022-2023](#), page 4

Designated Supports

Embedded

Breaks, Calculator, Digital Notepad, English Dictionary, English Glossary, Expandable Passages and/or Items, Global Notes, Highlighter, Keyboard Navigation, Line Reader, Mark for Review, Math Tools, Periodic Table, Spell Check, Strikethrough, Thesaurus, Writing Tools, Zoom

Non-embedded

Breaks, English Dictionary, Scratch Paper, Thesaurus

Embedded

Color Contrast, Illustration Glossaries, Masking, Mouse Pointer, Streamline, Text-to-speech, Translations (Glossary), Translations (Dual Language), Turn off Any Universal Tools

Non-embedded

Amplification, Bilingual Dictionary, Color Contrast, Color Overlays, Illustration Glossaries, Magnification, Medical Supports, Noise Buffers, Read Aloud, Read Aloud in Spanish, Scribe, Separate Setting, Simplified Test Directions, Translated Student Interface Messages, Translations (Glossary)

Accommodations

Embedded

American Sign Language, Braille, Braille Transcript, Closed Captioning, Text-to-speech

Non-embedded

100s Number Table, Abacus, Alternate Response Options, Braille, Calculator, Math Manipulatives, Multiplication Table, Print on Demand, Read Aloud, Scribe, Speech-to-text, Word Prediction

1. Universal Tools

- Available to **ALL** students
- Already set in TIDE

(Test Information Distribution Engine)

- See the list and descriptions of Universal Tools by assessment on

Table 1+, pp. 6-9 of [Crosswalk of Accessibility Features Across State Assessments in Hawai'i 2022-2023](#)
(Crosswalk or CAF).

Embedded
Breaks, Calculator, Digital Notepad, English Dictionary, English Glossary, Expandable Passages and/or Items, Global Notes, Highlighter, Keyboard Navigation, Line Reader, Mark for Review, Math Tools, Periodic Table, Spell Check, Strikethrough, Thesaurus, Writing Tools, Zoom

Non-embedded
Breaks, English Dictionary, Scratch Paper, Thesaurus

Table 1: Universal Tools on HSAP Assessments

Universal Tools		SB ELA CAT	SB ELA PT	SB Math	HSA Science and Biology EOC	Alg 1 and 2 EOCs
Embedded	Breaks	✓	✓	✓	✓	✓
	Digital Calculator			✓ ¹	✓	✓
	Digital Notepad	✓	✓	✓	✓	✓
	English Dictionary		✓ ²			
	English Glossary	✓	✓	✓		
	Enhanced Highlighter	✓	✓	✓	✓	✓
	Enhanced Line Reader	✓	✓	✓	✓	✓
	Expandable Passages and/or Stimuli	✓	✓	✓	✓	✓
	Global Notes		✓			
	Highlighter	✓	✓	✓	✓	✓
	Keyboard Navigation	✓	✓	✓	✓	✓
	Line Reader	✓	✓	✓	✓	✓
	Mark for Review	✓	✓	✓	✓	✓
	Periodic Table				✓	
	Math Tools			✓		✓
	Spell Check	✓	✓			
	Strikethrough	✓	✓	✓	✓	✓
	Thesaurus		✓ ²			
	Writing Tools	✓	✓			
	Zoom	✓	✓	✓	✓	✓
Non-embedded	Breaks	✓	✓	✓	✓	✓
	English Dictionary		✓ ²			
	Scratch Paper	✓	✓	✓	✓	✓
	Thesaurus		✓ ²			

¹ For calculator-allowed items only in SB Math grades 6–8 and 11

² For the ELA PT full write only

Source:
[CAF/](#)
[Crosswalk,](#)
 p. 6

Universal Tools

Available to all Students

Source: [Crosswalk of Accessibility Features Across State Assessments in Hawai'i 2022-2023](#), page 4

Designated Supports

Embedded

Breaks, Calculator, Digital Notepad, English Dictionary, English Glossary, Expandable Passages and/or Items, Global Notes, Highlighter, Keyboard Navigation, Line Reader, Mark for Review, Math Tools, Periodic Table, Spell Check, Strikethrough, Thesaurus, Writing Tools, Zoom

Non-embedded

Breaks, English Dictionary, Scratch Paper, Thesaurus

Embedded

Color Contrast, Illustration Glossaries, Masking, Mouse Pointer, Streamline, Text-to-speech, Translations (Glossary), Translations (Dual Language), Turn off Any Universal Tools

Non-embedded

Amplification, Bilingual Dictionary, Color Contrast, Color Overlays, Illustration Glossaries, Magnification, Medical Supports, Noise Buffers, Read Aloud, Read Aloud in Spanish, Scribe, Separate Setting, Simplified Test Directions, Translated Student Interface Messages, Translations (Glossary)

Accommodations

Embedded

American Sign Language, Braille, Braille Transcript, Closed Captioning, Text-to-speech

Non-embedded

100s Number Table, Abacus, Alternate Response Options, Braille, Calculator, Math Manipulatives, Multiplication Table, Print on Demand, Read Aloud, Scribe, Speech-to-text, Word Prediction

2. Designated Supports

- Are accessibility features or tools that are either provided as digitally-delivered parts of the test platform (embedded) or separate from it (non-embedded)
- Are provided to any student for whom the need has been indicated by an educator (or team of educators with parent/guardian and/or student input, when possible)
- **These supports may not be provided for ALL students because they are not universal tools.**
- Students should be familiar with using the designated supports assigned to them.
- Not pre-selected in TIDE; set by authorized school staff with exceptions

Designated Supports

- Rich set of state test tools by assessment
- Policy and TIDE setting controlled by school authorized staff
- No verification /form by the Assessment Section is required

Table 4: Designated Supports on HSAP Assessments

Designated Supports		SB ELA CAT	SB ELA PT	SB Math	HSA Science and Biology EOC	Alg 1 and 2 EOCs
Embedded	Color Contrast	✓	✓	✓	✓	✓
	Masking	✓	✓	✓	✓	✓
	Mouse Pointer	✓	✓	✓	✓	✓
	Streamline	✓	✓	✓	✓	✓
	Text-to-Speech	✓ ¹	✓	✓	✓	✓
	Translations (Glossary)			✓		
	Translations (Dual Language)			✓	✓	
	Turn off Any Universal Tools	✓	✓	✓	✓	✓
Non- embedded	100s Number Table				✓	✓
	Abacus				✓	✓
	Amplification	✓	✓	✓	✓	✓
	Bilingual Dictionary		✓ ²		✓	✓
	Calculator (Specialized)				✓	✓
	Color Contrast	✓	✓	✓	✓	✓
	Color Overlay	✓	✓	✓	✓	✓
	Magnification	✓	✓	✓	✓	✓
	Medical Supports	✓	✓	✓	✓	✓
	Multiplication Table				✓	✓
	Noise Buffers	✓	✓	✓	✓	✓
	Read Aloud	✓ ³	✓	✓	✓	✓
	Read Aloud in Spanish			✓	✓	
	Scribe	✓	✓ ⁴	✓	✓	✓
	Separate Setting	✓	✓	✓	✓	✓
	Simplified Test Directions	✓	✓	✓	✓	✓
	Translated Student Interface Messages	✓	✓	✓	✓	✓
	Translations (Glossary)			✓ ⁵		

Source: pp. 10-11, Table 4.

Be sure to read: 1) which assessments or part of the assessments the Designated Supports (DSs) are available to be used; and 2) descriptions of DSs. Refer to pp. 11-17.

Universal Tools

Available to all Students

Source: [Crosswalk of Accessibility Features Across State Assessments in Hawai'i 2022-2023](#), page 4

Designated Supports

Embedded

Breaks, Calculator, Digital Notepad, English Dictionary, English Glossary, Expandable Passages and/or Items, Global Notes, Highlighter, Keyboard Navigation, Line Reader, Mark for Review, Math Tools, Periodic Table, Spell Check, Strikethrough, Thesaurus, Writing Tools, Zoom

Non-embedded

Breaks, English Dictionary, Scratch Paper, Thesaurus

Embedded

Color Contrast, Illustration Glossaries, Masking, Mouse Pointer, Streamline, Text-to-speech, Translations (Glossary), Translations (Dual Language), Turn off Any Universal Tools

Non-embedded

Amplification, Bilingual Dictionary, Color Contrast, Color Overlays, Illustration Glossaries, Magnification, Medical Supports, Noise Buffers, Read Aloud, Read Aloud in Spanish, Scribe, Separate Setting, Simplified Test Directions, Translated Student Interface Messages, Translations (Glossary)

Accommodations

Embedded

American Sign Language, Braille, Braille Transcript, Closed Captioning, Text-to-speech

Non-embedded

100s Number Table, Abacus, Alternate Response Options, Braille, Calculator, Math Manipulatives, Multiplication Table, Print on Demand, Read Aloud, Scribe, Speech-to-text, Word Prediction

3. State Test Accommodations

- These accommodations are changes in procedures for materials that:
 - increase the equitable access for students who need them;
 - allow these students the opportunity to show what they know and can do; and
 - **If provided, will not invalidate the test score and be in compliance with the *IDEA*.**
- Only students who have documented needs in their IDEA-eligible Individualized Educational Plans (IEPs) or 504 Plans are eligible for verification (exception: non-IDEA/504 student with a broken arm/hand can be verified for the Speech-to-Text or Scribe state test accommodation).
- Students should be familiar with using state test accommodation(s).
- Not pre-selected in TIDE; set by Assessment Sec. staff with exceptions

Instructional Accommodation vs. State Test Accommodation

Instructional Accommodation

A change made to the teaching or testing procedures:

- to provide a student with access to information
- to demonstrate knowledge and skills.

State Test Accommodation

A change made to the state testing procedure:

- to provide a student with access to the test content
- to demonstrate knowledge and skills ***without invalidating the (state) test score.***

State Test Accommodation vs. Modification

State Test Accommodation \neq Modification




Modification:

“A change in what the student is expected to learn and/or demonstrate. While a student may be working on **modified course content**, the subject area remains the same as the rest of the class.”

State Test Accommodation:

The **test content** for Smarter Balanced (SB) general assessments for ELA, math, science (NGSS), Biology, Algebra is not reduced or modified.

Some MISCONCEPTIONS about State Test Accommodations

-  * The accommodations used in day-to-day instruction are akin to the accommodations provided on a state assessment.
-  * If a student receives a classroom accommodation, they should receive a state test accommodation.
-  * IEP Team decisions about accommodations for statewide assessments are final and binding.

Federal Annual Summative Participation Requirements

IDEA Sec. 300.160

(a) General. A State must ensure that **all children with disabilities are included in... State ...assessments** described under section 1111 of the ESEA, 20 U.S.C. 6311, **with appropriate accommodations and alternate assessments, if necessary...**

(b) Accommodation guidelines.

(1) **A State...must develop guidelines for the provision of appropriate accommodations.**

(2) **The State's...guidelines must—**

(i) **Identify only those accommodations for each assessment that do not invalidate the score; and**

(ii) **Instruct IEP Teams to select, for each assessment, only those accommodations that do not invalidate the score.**

First Example of State Test Supports

- Deepen understanding of State Test Supports:
 1. Calculator Universal Tool vs. Calculator (Specialized) State Test Accommodation

Universal Tools

Available to all Students

Source: [Crosswalk of Accessibility Features Across State Assessments in Hawai'i 2022-2023](#), page 4

Designated Supports

Embedded

Breaks, Calculator, Digital Notepad, English Dictionary, English Glossary, Expandable Passages and/or Items, Global Notes, Highlighter, Keyboard Navigation, Line Reader, Mark for Review, Math Tools, Periodic Table, Spell Check, Strikethrough, Thesaurus, Writing Tools, Zoom

Non-embedded

Breaks, English Dictionary, Scratch Paper, Thesaurus

Embedded

Color Contrast, Illustration Glossaries, Masking, Mouse Pointer, Streamline, Text-to-speech, Translations (Glossary), Translations (Dual Language), Turn off Any Universal Tools

Non-embedded

Amplification, Bilingual Dictionary, Color Contrast, Color Overlays, Illustration Glossaries, Magnification, Medical Supports, Noise Buffers, Read Aloud, Read Aloud in Spanish, Scribe, Separate Setting, Simplified Test Directions, Translated Student Interface Messages, Translations (Glossary)

Accommodations

Embedded

American Sign Language, Braille, Braille Transcript, Closed Captioning, Text-to-speech

Non-embedded

100s Number Table, Abacus, Alternate Response Options, Braille, Calculator, Math Manipulatives, Multiplication Table, Print on Demand, Read Aloud, Scribe, Speech-to-text, Word Prediction

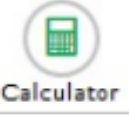
Universal Tools – (Embedded) Calculator



Universal Tool	Description
Digital Calculator (calculator-allowed items on the Smarter Balanced math grades 6–8 and 11 tests)	An embedded on-screen digital calculator can be accessed when students click on a calculator button. For Smarter Balanced assessments in math (grades 6–8 and 11), the calculator universal tool is only available on calculator-allowed items. For the Algebra 1 and Algebra 2 EOC test, HSA Science Tests and the Biology 1 EOC tests, the digital calculator is available for use on <u>all</u> items.
(<u>all items on HSA Science tests and the Biology, Algebra 1 and Algebra 2 EOC exams</u>)	<p>For the Algebra 1 and Algebra 2 EOC tests, the on-screen digital calculator that is provided to students varies by test segment. Students will be given access to either an onscreen digital calculator that provides scientific/graphing/regression functionality OR an onscreen digital calculator that is limited to scientific functions.</p> <p>When the embedded digital calculator is not appropriate for a student, the student may use a specialized calculator, see: Non-embedded Accommodations (Smarter Balanced math tests) and Non-embedded Designated Supports (Biology 1, Algebra 1 and Algebra 2 EOC exams and HSA Science tests).</p>

Source: Page 7, [Crosswalk of Accessibility Features Across State Assessments in Hawai'i 2022-2023](#) (Crosswalk or CAF)

State Test Accommodation – (Non-Embedded) Calculator (Specialized)

Accommodation	Description	Recommendations for Use
<p>Calculator (calculator-allowed items on the Smarter Balanced math assessment, grades 6–8 and 11)</p> <ul style="list-style-type: none"> “Calculator-allowed” items are marked with this symbol: 	<p>A non-embedded stand-alone calculator for students needing a specialized calculator. When the embedded digital calculator is not appropriate for a student, the student may use a specialized calculator. Examples of specialized calculators include: a large button/large display calculator, a calculator built into an assistive technology device, an adapted keyboard calculator, a voice activated calculator, a talking calculator, or a braille calculator. If an assistive technology device is used it must be consistent with the student’s IEP/504 Plan. In addition, access to the internet must be disabled on any assistive technology device used.</p>	<ul style="list-style-type: none"> Students with motor or visual impairments that prevent them from accessing the embedded on-screen digital calculator (for use only on calculator allowed test items). For the SB math assessments, Test Administrators must ensure that students only use their specialized calculator on calculator-allowed items. One-on-one or small group proctoring is recommended. See the Hawai'i State Test Accommodation Guides page of the alohahsap.org portal for specific information and criteria for the Calculator Accommodation.

Source: Page 23, [Crosswalk of Accessibility Features Across State Assessments in Hawai'i 2022-2023](#) (Crosswalk or CAF)

Calculator UT vs. Calculator (Specialized) State Test Accommodation

Calculator Universal Tool	Calculator (Specialized) State Test Accommodation
<u>For the SB math test</u> : calculator-allowed items only	<u>For the SB math test</u> : calculator-allowed items only
For Grade 6+	For Grade 6+
Available to ALL students	Available to IEP/504 Students with motor or visual impairments (refer to State Test Accommodation Guide for Calculator (Specialized))
Digital (embedded)	External* (non-embedded) *security
No verification request form or verification process is required	Verification request form and verification by the Assessment Section are required
Already set in TIDE** (**test settings in TDS)	Set in TIDE by Assessment Section, if verified
Available at Designated Support level for Science tests and Biology/Algebra EOC exams	Available at Designated Support level for Science tests and Biology/Algebra EOC exams

Second Example of State Test Supports

- Deepen understanding of State Test Supports:

2. Text-to-Speech Designated Support vs. Text-to-Speech State Test Accommodation

Universal Tools

Available to all Students

Source: [Crosswalk of Accessibility Features Across State Assessments in Hawai'i 2022-2023](#), page 4

Designated Supports

Embedded

Breaks, Calculator, Digital Notepad, English Dictionary, English Glossary, Expandable Passages and/or Items, Global Notes, Highlighter, Keyboard Navigation, Line Reader, Mark for Review, Math Tools, Periodic Table, Spell Check, Strikethrough, Thesaurus, Writing Tools, Zoom

Non-embedded

Breaks, English Dictionary, Scratch Paper, Thesaurus

Embedded

Color Contrast, Illustration Glossaries, Masking, Mouse Pointer, Streamline, Text-to-speech, Translations (Glossary), Translations (Dual Language), Turn off Any Universal Tools

Non-embedded

Amplification, Bilingual Dictionary, Color Contrast, Color Overlays, Illustration Glossaries, Magnification, Medical Supports, Noise Buffers, Read Aloud, Read Aloud in Spanish, Scribe, Separate Setting, Simplified Test Directions, Translated Student Interface Messages, Translations (Glossary)

Accommodations

Embedded

American Sign Language, Braille, Braille Transcript, Closed Captioning, Text-to-speech

Non-embedded

100s Number Table, Abacus, Alternate Response Options, Braille, Calculator, Math Manipulatives, Multiplication Table, Print on Demand, Read Aloud, Scribe, Speech-to-text, Word Prediction

Text-to-Speech (TTS) Designated Support vs. Text-to-Speech (TTS) State Test Accommodation

- Text-to-Speech (TTS) state test accommodation: allows audio delivery of the **Reading Passages** component of the English Language Arts Computer Adaptive Test (ELA-CAT) tests.
- TTS designated support for:
 - ELA state tests: allows the audio delivery of test directions, questions, and answer options (all parts of the ELA state tests except the Reading Passages).
 - Math and science tests and Biology/(optional) Algebra EOC exams: allows the audio delivery of the entire test — test directions, questions, and answer options.



Guide for IEP/504 Teams Considering the Text-to-Speech (TTS) or Read Aloud (RA) State Test Accommodation (August 2022)

Source: [Hawai'i State Test Accommodation Guide for Text-to-Speech and Read Aloud](#)

Text-to-Speech (TTS) Designated Support vs. Text-to-Speech State Test Accommodation

TTS Designated Support

- For the ELA-CAT: audio delivery of test directions, questions, answer options, and stimulus, **EXCEPT Reading Passages**
- For the ELA-Performance Task (ELA-PT), math, science, and EOC tests: audio delivery of entire tests

TTS State Test Accommodation

- For ELA-CAT: audio delivery of ***Reading Passages*** on ELA test

Table 4: Designated Supports on HSAP Assessments

Designated Supports		SB ELA CAT	SB ELA PT	SB Math	HSA Science and Biology EOC	Alg 1 and 2 EOCs
Embedded	Color Contrast	✓	✓	✓	✓	✓
	Masking	✓	✓	✓	✓	✓
	Mouse Pointer	✓	✓	✓	✓	✓
	Streamline	✓	✓	✓	✓	✓
	Text-to-Speech	✓ ¹	✓	✓	✓	✓
	Translations (Glossary)			✓		
	Translations (Dual Language)			✓	✓	
	Turn off Any Universal Tools	✓	✓	✓	✓	✓
Non-embedded	100s Number Table				✓	✓
	Abacus				✓	✓
	Amplification	✓	✓	✓	✓	✓
	Bilingual Dictionary		✓ ²		✓	✓
	Calculator (Specialized)				✓	✓
	Color Contrast	✓	✓	✓	✓	✓
	Color Overlay	✓	✓	✓	✓	✓
	Magnification	✓	✓	✓	✓	✓
	Medical Supports	✓	✓	✓	✓	✓
	Multiplication Table				✓	✓
	Noise Buffers	✓	✓	✓	✓	✓
	Read Aloud	✓ ³	✓	✓	✓	✓
	Read Aloud in Spanish			✓	✓	
	Scribe	✓	✓ ⁴	✓	✓	✓
	Separate Setting	✓	✓	✓	✓	✓
	Simplified Test Directions	✓	✓	✓	✓	✓
	Translated Student Interface Messages	✓	✓	✓	✓	✓
	Translations (Glossary)			✓ ⁵		

¹ For the ELA CAT, TTS as a designated support does not include the audio delivery of the reading passages. For the audio delivery of the reading passages, see the [TTS accommodation](#).

² For ELA PT full write only

³ For the ELA CAT, Read Aloud as a designated support does not include the human reader delivery of the CAT reading passages. For the human reader delivery of the reading passages, see the [Read Aloud accommodation](#).

⁴ For all items except the ELA performance task full write. See the [Scribe accommodation](#) for the ELA performance task full write.

⁵ For math items on the paper-pencil test.

Source: pp. 10-11, [Crosswalk of Accessibility Features Across State Assessments in Hawai'i 2022-2023 \(Crosswalk/CAF\)](#).

ALSO, be sure to read: 1) which assessments or part of the assessments the Designated Supports (DSs) are available to be used; and 2) descriptions of DSs. Refer to pp. 11-17.

Table 7: Accommodations on HSAP Assessments

Accommodations		SB ELA CAT	SB ELA PT	SB Math	HSA Science and Biology EOC	Alg 1 and 2 EOCs
Embedded	American Sign Language (ASL)	✓ ¹		✓ ¹		
	Braille	✓	✓	✓	✓	
	Braille Transcript	✓ ²				
	Closed Captioning	✓ ²				
	Text-to-Speech	✓ ³				
Non-embedded	100s Number Table			✓		
	Abacus			✓		
	Alternate Response Options	✓	✓	✓	✓	✓
	Braille (paper/pencil assessment)	✓	✓	✓		
	Calculator (Specialized)			✓		
	Math Manipulatives ⁴			✓		✓
	Multiplication Table			✓		
	Print on Demand	✓	✓	✓	✓	✓
	Read Aloud	✓ ⁵				
	Scribe ⁶		✓ ⁵			
	Speech-to-Text ⁶	✓	✓	✓	✓	✓
	Word Prediction ⁶		✓			

¹ For ELA listening items and math items

² For ELA listening passages/items

³ For ELA CAT reading passages. All other HSAP assessments allow the TTS and Read Aloud support at the designated support level. For more information on the appropriate use/assignment of the TTS and RA accommodations, refer to the [Hawaii State Test Accommodation Guides \(TTS/RA\)](#) or the [Smarter Balanced Guidelines for Choosing TTS/RA Accommodation \(Grades 3-5\)](#).

⁴ For math and Algebra EOC items. Hawai'i has temporary use of Math Manipulatives (MM) as accommodations for state testing in SY 2021-2022, consult [Appendix C: Guidance Brief: IEP/504 Teams Considering the Math](#)

⁵ [Manipulatives \(MMs\) State Test Temporary Accommodations](#) for more information.

⁵ For ELA performance task full write.

⁶ Scribe is available at the designated support level while STT and WP are not available at the designated support level. For more information on the appropriate use/assignment of the Scribe, STT, and WP accommodations, refer to the [Hawaii State Test Accommodation Guides \(Scribe, STT, and WP\)](#).

¹ For ELA CAT reading passages. All other HSAP assessments allow the TTS and Read Aloud support at the designated support level. For more information on the appropriate use/assignment of the TTS and RA accommodations, refer to the [Hawaii State Test Accommodation Guides \(TTS/RA\)](#) or the [Smarter Balanced Guidelines for Choosing TTS/RA Accommodation \(Grades 3-5\)](#).

[CAF/Crosswalk](#),
Table 7, pp. 18-
26

Sample Evidence from IEP for Text-to-Speech State Test Accommodation

Student Name	Student ID	Birth Date	Gender	Grade	School
				05	

Considerations	PLEP	Transition Services	Standards and Goals	Services	ESY	Statewide Assessment	LRE	Actions
----------------	-------------	---------------------	---------------------	----------	-----	----------------------	-----	---------

Reading Assessment Used *

Other Reading Assessment Used *

Scaled Score

Grade Equivalent *

2.7

Assessment Date *

01/29/2022

The State's...guidelines must instruct IEP Teams to select, for each assessment, only those accommodations that do not invalidate the score. (IDEA Sec. 300.160)

*Section III: Critical Considerations Before Assigning the TTS State Test Accommodation for Reading Passages

Purpose of Text-to-Speech (TTS) State Test Accommodation

- Frequently, the TTS (instructional) accommodation is used during instruction to assist students in the acquisition of decoding and fluency skills.
- Teachers, parents, or peers read along with the student who needs support. This helps to develop the emerging readers' skills and aids in their comprehension of grade-level text.
- ***However, in a state test setting, the TTS accommodation would not be used when the purpose of the test is to measure a student's reading level. For state tests that measure a student's reading ability, the student is asked to read independently.***

*Source: p. 3, [Hawai'i State Test Accommodation Guide for Text-to-Speech and Read Aloud](#)

Sample Evidence from IEP for Text-to-Speech State Test Accommodation

Student Name	Student ID	Birth Date	Gender	Grade	School
				05	

Considerations	PLEP	Transition Services	Standards and Goals	Services	ESY	Statewide Assessment	LRE	Actions
----------------	-------------	---------------------	---------------------	----------	-----	----------------------	-----	---------

Reading Assessment Used *

Other Reading Assessment Used *

Scaled Score

Grade Equivalent *

2.7

Assessment Date *

01/29/2022

The State's...guidelines must instruct IEP Teams to select, for each assessment, only those accommodations that do not invalidate the score. (IDEA Sec. 300.160)

Documented Need for the TTS State Test Accommodation

(Section III of the TTS State Test Accommodation Guide)

The TTS/RA state test accommodation should only be recommended for verification when supported with substantial documented evidence of need. It is necessary to show *in the student's IEP (Present Levels of Educational Performance (PLEP), Services, Standards and Goals, and Statewide Assessment)*:

1. The student cannot see the text or utilize braille; e.g., a recently blind student who is unfamiliar with or not yet proficient in braille;
2. The student exhibits such difficulties as difficulty learning letters or letter sounds, difficulty in learning sight words, and difficulty in phoneme blending; or
3. The student has exhibited extremely limited to no growth in decoding and fluency skills over time despite extensive, repeated interventions that have been undertaken and implemented over several years to remediate the reading disability. (These interventions must be shown to have been intensive and varied with modifications over time if shown to be ineffective. In other words, if one intervention is ineffective, other interventions should have been attempted.)

Considerations BEFORE Submitting State Test Accommodation Verification Requests to the Assessment Section

Considerations (or Checklist) BEFORE Submitting State Test Accommodation Verification Requests to the Assessment Section

1. IEP/504 Team finds that the student has an IEP/504 Plan or for a student without an IEP/504 Plan, he/she has a hand/arm injury (for accommodations – only Scribe or Speech-to-Text state test accommodation is available to the injured student).
2. IEP/504 Team has explored both *Universal Tools* and *Designated Supports* described in the [Crosswalk/CAF](#) and has not found an appropriate test support at those levels that the Team believes would meet the student's need for state testing.

Considerations (or Checklist) BEFORE Submitting State Test Accommodation Verification Requests to the Assessment Section

3. IEP/504 Team has reviewed Section III of the Hawai'i State Test Accommodation Guide for X Accommodation or Math Manipulatives Guidance Brief to find out:
 - What (content/construct) the test is measuring
 - Which test/portion of the test the state test accommodation covers
 - The purpose of the state test accommodation
 - The documented need for the X State Test Accommodation
4. IEP/504 Team has included evidence of the “documented need for the X accommodation” in the student’s IEP/504 Plan. Refer to [eCSSS](#) [Directions](#) (next slide).

Documentation of State Test Supports in eCSSS and TIDE for *IDEA/504 Plan Students, including EL Students* with Disabilities*

Documentation of evidence of need in IEP/504 Plan to support verification review. Refer to [eCSSS Directions](#) and example below:

Accommodation Evidence in IEP Records

Within the IEP, there are **three tabs** that are used to document student need:

The screenshot shows the 'Individualized Education Program' form. At the top, there is a header 'Individualized Education Program'. Below it, there is a row of input fields for 'Student Name', 'Student ID', 'Birth Date', 'Gender', 'Grade', and 'School'. Below these fields is a row of tabs: 'Considerations', 'PLEP', 'Transition Services', 'Standards and Goals', 'Services', 'ESY', 'Statewide Assessment', 'LRE', and 'Actions'. Three pink circles are drawn around the 'PLEP', 'Services', and 'Statewide Assessment' tabs. Three pink arrows originate from the text 'three tabs' in the paragraph above and point to these three tabs. Below the tabs, there are three labels: 'Data' under 'PLEP', 'Use' under 'Services', and 'Accommodation' under 'Statewide Assessment'.

Individualized Education Program								
Student Name	Student ID	Birth Date	Gender	Grade	School			
<input type="text"/>	<input type="text"/>	<input type="text"/>	<input type="text"/>	<input type="text"/>	<input type="text"/>			
Considerations	PLEP	Transition Services	Standards and Goals	Services	ESY	Statewide Assessment	LRE	Actions
	Data			Use		Accommodation		

**Note: Documentation of administrative considerations for EL students WITHOUT disabilities is done in Infinite Campus (IC), not eCSSS.*

Considerations (or Checklist) BEFORE Submitting State Test Accommodation Verification Requests to the Assessment Section

5. IEP/504 Team understands the different policies and procedures for assigning designated supports and state test accommodations (see next slide).

Different Policies and Procedures for Assigning Designated Supports and State Test Accommodations

State Test Accommodations	Designated Supports (DSs)
<ul style="list-style-type: none">• Eligibility*: Students with IEPs or 504 Plans• Form Required: Yes (via verification form)• State Verification Required: Yes• Documentation of Evidence Required for IDEA/504/EL with Disabilities: Yes, in eCSSS, see eCSSS Directions.• Who Enables TIDE Settings? Assessment Section, upon verification• Records Match: Yes, state test accommodation records match in eCSSS & TIDE	<ul style="list-style-type: none">• Eligibility: Any student (school policy)• Form Required: No• State Verification Required: No• Documentation of Evidence Required for IDEA/504/EL with Disabilities: Yes, in eCSSS, see eCSSS Directions.• Who Enables TIDE Settings? School test coordinator, test administrator, teacher, or authorized contact• Records Match: Yes, DSs records match in eCSSS & TIDE

**Exception: Students without IEPs/504 Plans who have hand/arm injuries are eligible for the Scribe or Speech-to-Text accommodation for state testing.*

State Test Accommodation Verification Request Process for School IEP/504 Plan Teams

1. After reviewing the considerations/checklist, the school IEP/504 Team decides/recommends that the student be provided with x state test accommodation(s) for state testing.
2. Test Coordinator (TC)/authorized school staff is directed to complete the [State Test Accommodation Verification Request Form](#) (online) and submit it to the Assessment Section (AS) for verification review.
3. AS will conduct review and inform/email the requestor(s) that:
 - Request is verified, and AS has set the accommodations in TIDE; **OR**
 - Request is not verified, and TC needs to **align** the state test supports records in TIDE with those in eCSSS (next slide).

Alignment of State Test Supports in eCSSS and TIDE for *IDEA/504 Plan Students, including EL Students with Disabilities*

State test support records in TIDE must match those under the “Statewide Assessment” tab in the student’s IEP/504 Plan (stored in eCSSS).

For example: If any state test accommodation X such as TTS has not been verified by the Assessment Section (AS), then:

- TTS accommodation won’t be set in TIDE by the AS.
- This creates a mismatch between the test support records in TIDE and those under the *Statewide Assessment* tab in eCSSS
- *TC needs to correct this by unchecking the TTS accommodation box under the “Statewide Assessment” tab of the student’s IEP/504 Plan (stored in eCSSS)*

How to Submit a State Test Accommodation Verification Request Form

State Test Accommodation Verification Request Form

Link to Form: <https://www.surveymonkey.com/r/ACCOM2022-23>

1. Student 10-digit SSID **[Check for accuracy! to avoid delays]**
2. Enrolled grade
3. School name
4. School 3-digit code
5. Name, email address, and role of the person submitting the form
6. Answer question #10 (next slide)

State Test Accommodation Verification Request Form

* 10. Select the state test accommodation option(s) for the student (check all that apply):

- ☐ **No Change or Keep Verified Accommodation(s)** - Use the verified state test accommodation(s) carried over from SY 2021-2022 to SY 2022-2023. [OPTION 1] *CHECK ACCOMMODATION SETTINGS IN TIDE*
- ☐ **Remove Verified Accommodation(s)** - Identify for removal prior verified state test accommodation(s) that the student no longer uses for state testing in the "Additional Comments" box. [OPTION 2] *THIS ASSUMES TC WILL REMOVE THE SAME FROM eCSSS (Statewide Assessment tab of IEP/504 Plan).*
- ☐ **Verify (ADD) New Accommodation(s)** - Request verification of new state test accommodation(s) for use in SY 2022-2023. Go to question #11 to select the state test accommodations. [OPTION 3] *BE SURE TO ALIGN RECORDS IN eCSSS (Statewide Assessment tab) IF ACCOMMODATION IS NOT VERIFIED.*

Electronic State Test Accommodation Verification Request Form

***ONE** electronic form for all SB assessments (no paper form)

***ALL** state test accommodations set in TIDE by Assessment Section, if verified

*Deadlines (see below)

SY 2022-2023 Hawai'i State Test Accommodation Verification Request Form
(<https://www.surveymonkey.com/r/ACCOM2022-23>)

Accommodations for statewide testing are available for students with IEPs or 504 Plans or for students with a recent injury (such as a broken hand or arm).

To retain, remove or verify (add) state test accommodation(s) for the general assessments, please complete and submit the online test accommodation verification form.

Deadlines to Submit State Test Accommodation Verification Request Forms

The [SY 2022-23 Hawai'i State Test Accommodation Verification Request Form](#) should be submitted *one month* prior to the opening of the test window (see next slide for test window dates).

In all cases, state test accommodation requests should be submitted to the Assessment Section no later than **14** days prior to state testing of a student.

SY 2022-2023 TEST WINDOW

SB Summative Assessments for Grades 3-8 and 11:

- Grade 11 (block schools): Nov. 21 - Dec. 16, 2022
- Grades 3-8 and 11: Feb. 21 – May 26, 2023
- Multi-Track Schools for Grades 3-8
 - Yellow Track: Feb. 21 – May 26, 2023
 - Red, Blue, and Green Tracks: : March 13 – June 16, 2023

HSA Science (Grades 5 & 8)

Jan. 10 – May 26, 2023 (June 16 for multi-track schools)

Biology EOC Exams and (optional) Algebra 1 & 2 EOC Exams

Fall (block schedule schools only): Nov. 21 – Dec. 16, 2022

Spring: April 24 – May 26, 2023

Multi-track Schools: May 30 – June 16, 2023

Summer: June 13 – July 14, 2023

*Dates are subject to change, refer to - [May 23, 2022 Memo](#)

Accessibility and Accommodations Resources

- Assessment News:
<https://smarterbalanced.alohahsap.org/resources/hawaii-doe-assessment-news/assessment-news-2022-2023/assessment-news-2022-2023>
- ADVANCE (before 9/29/22) review materials and resources:
<https://smarterbalanced.alohahsap.org/resources/resources-2022-2023/accommodations-training-2022-2023>
- Today's (9/29/2022) Review Session PPTX and recorded webinar:
<https://smarterbalanced.alohahsap.org/resources#folder=Webinars>
- Additional Accessibility and Accommodations Resources on alohahsap.org:
alohahsap.org → Smarter Balanced → Resources → select "Accessibility and Accommodations" folder (see left column with all folders)

Questions?

Elaine Lee, Ph.D.

Elaine.Lee@k12.hi.us

(808) 307-3635